

## **Tape Out Packing Option for SuperBOT Automated Programmers**



After programming using the SuperBOT automated programmer, the optional Tape Out device will automatically repack chips by using the air tight type or hot seal method. Programmed chips will be packed into tapes (with optional marking device) and the tape width can be adjusted between 8 to 32mm.

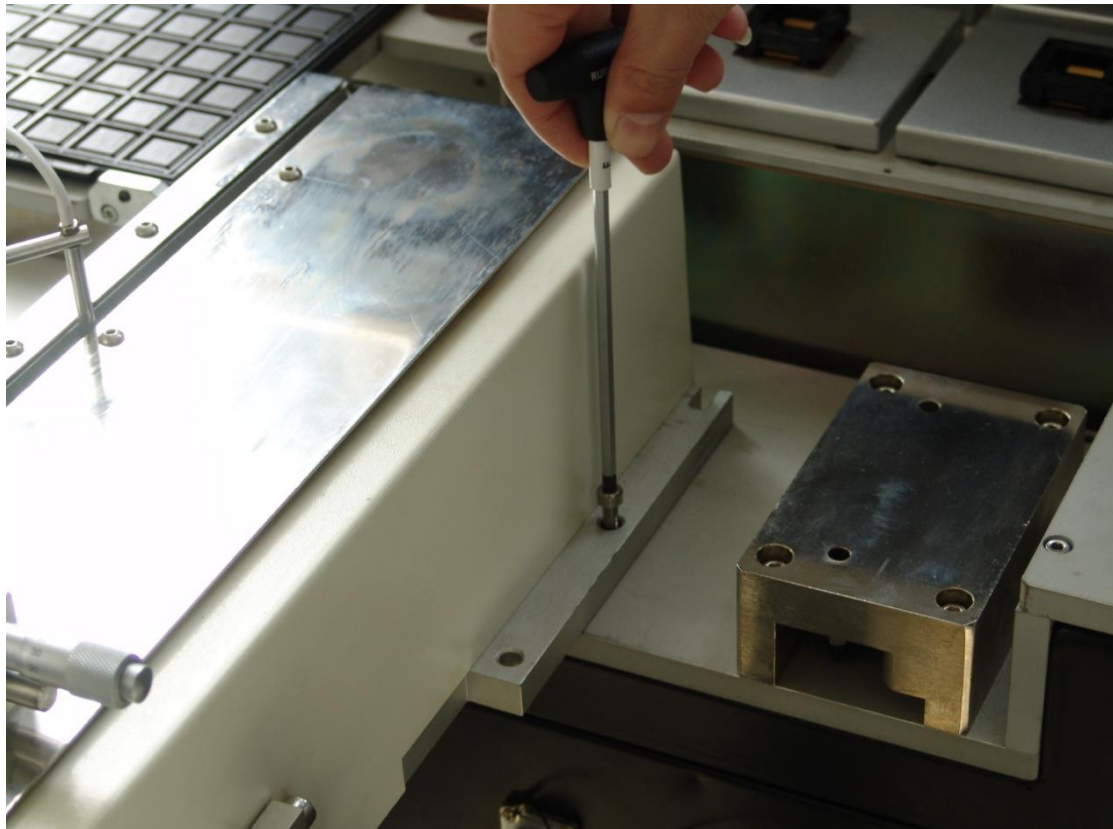
**Installation and replacement of TAPE-OUT device:**



(1) Move the TAPE-OUT to be in front of the main machine.



(2) Adjust trundle to enable the TAPE-OUT to be at the same height with the mounting board and level it.



(3) Fasten the 4 M5 screws tightly into each mounting hole.



(4) Connect power cord and signal wire.

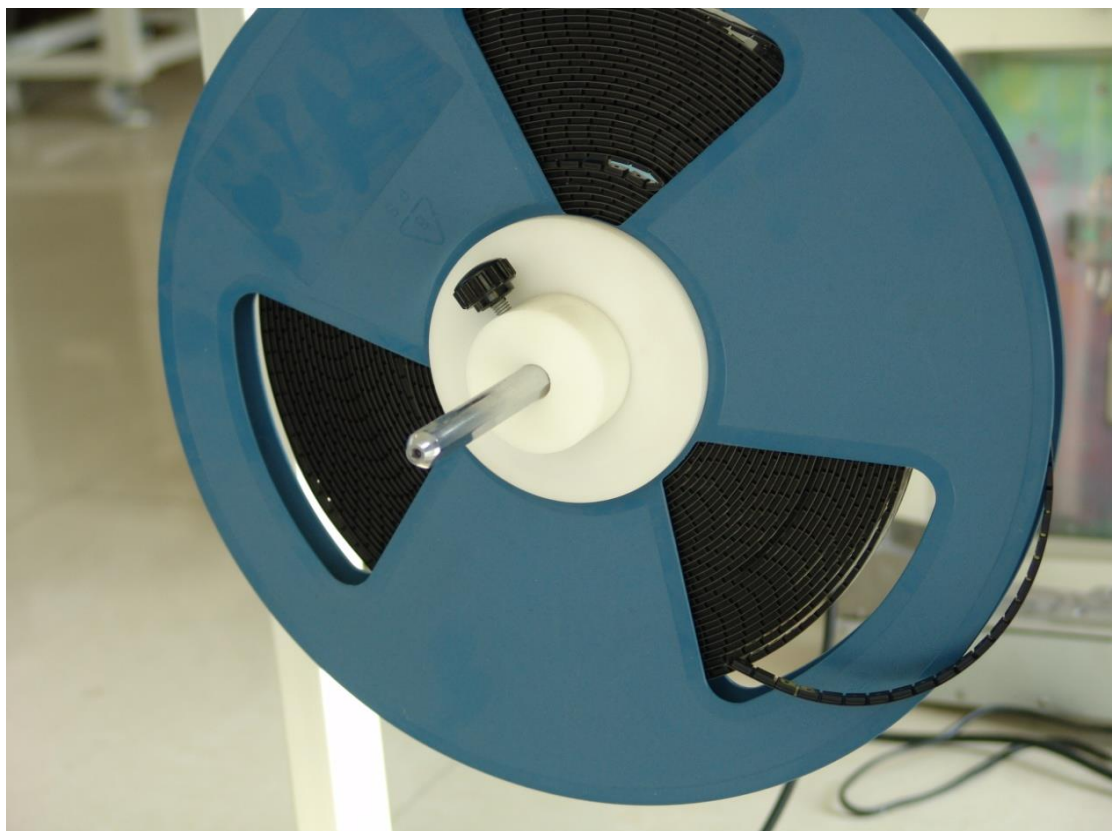


(5) Connect air hose.



(6)Fasten the wheel for fixing the lower tape.





(7) Mount the empty lower tape tray and fasten the screw.

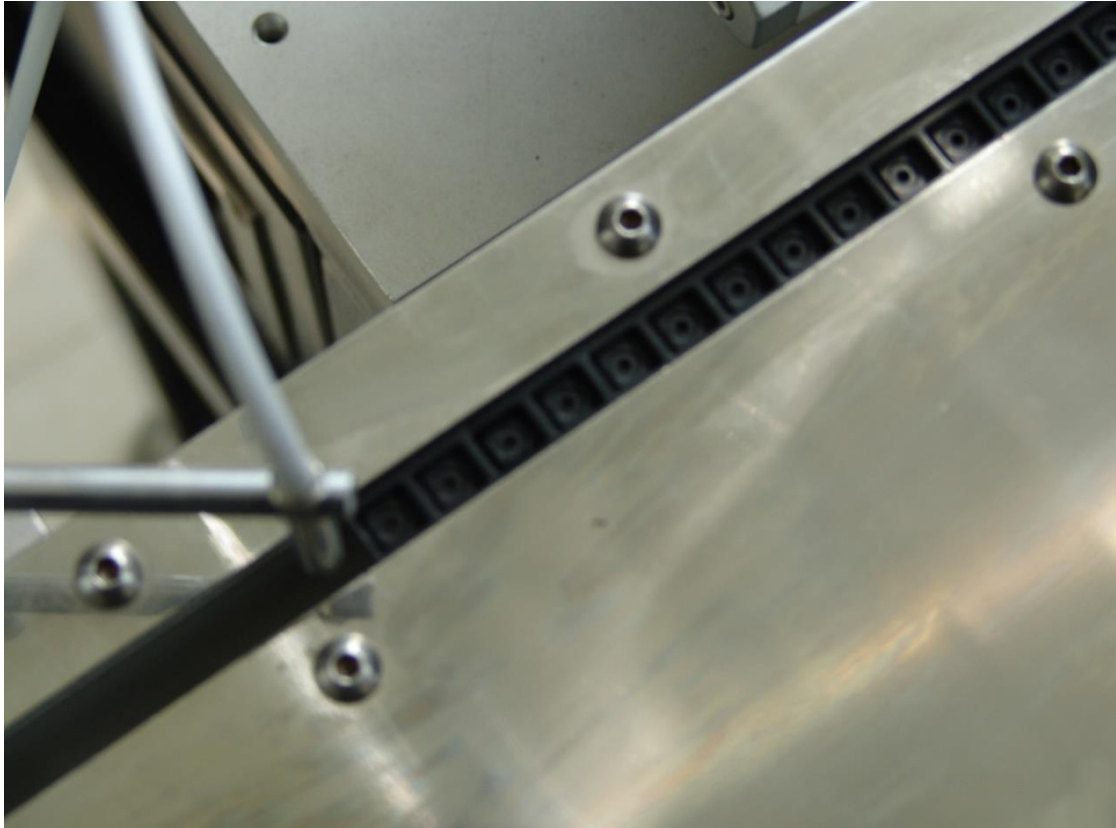




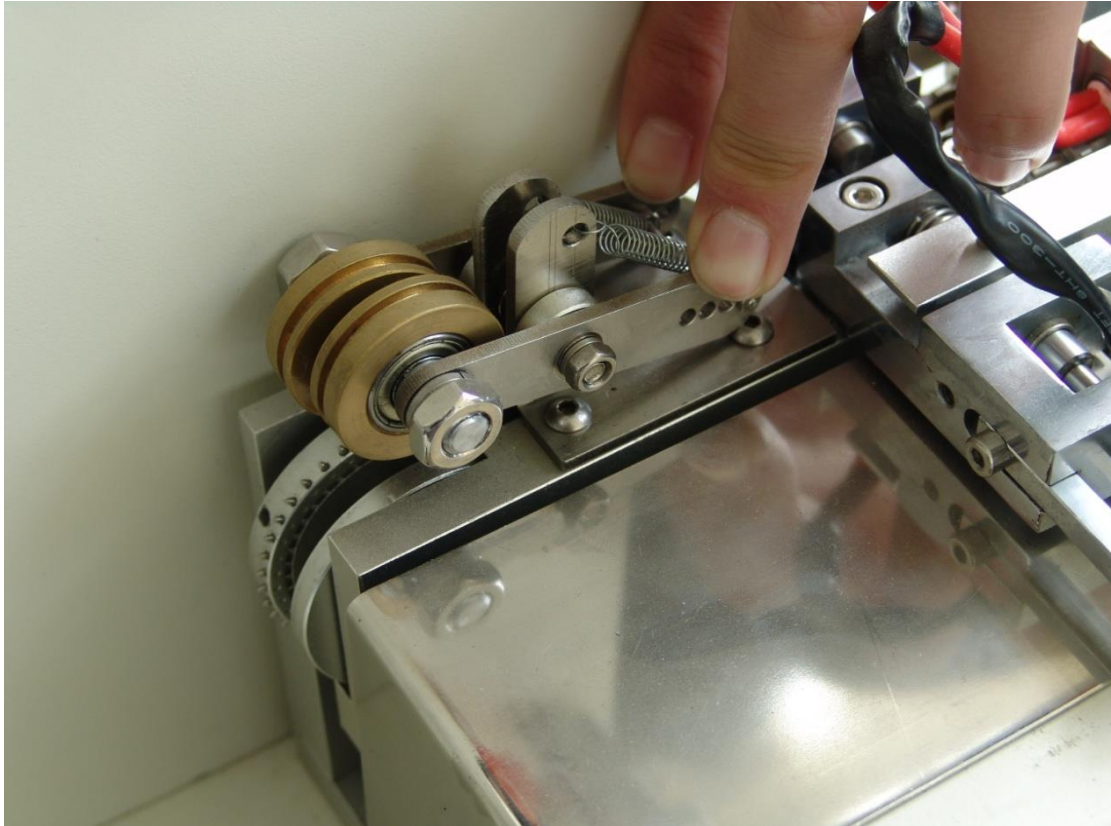
(8) Wind the lower tape around the detection mechanism and lead it upward.



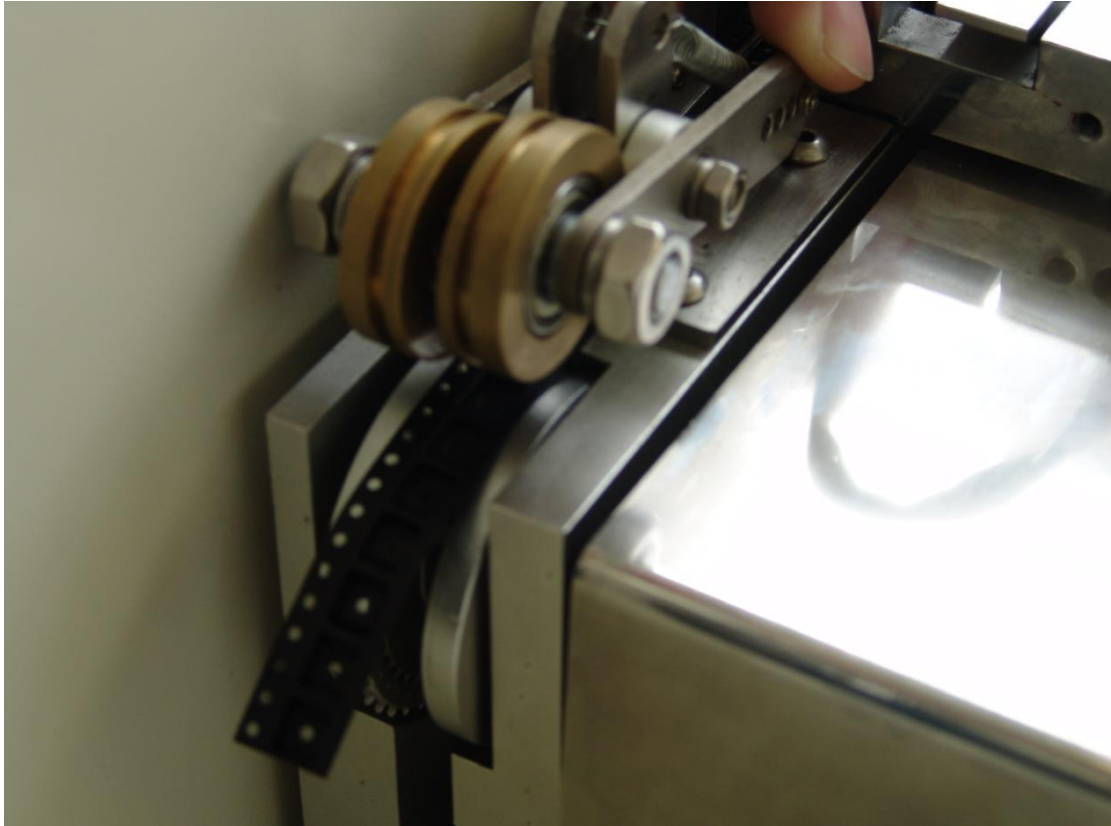
(9) Lead the tape through the lower opening from the machine platform.



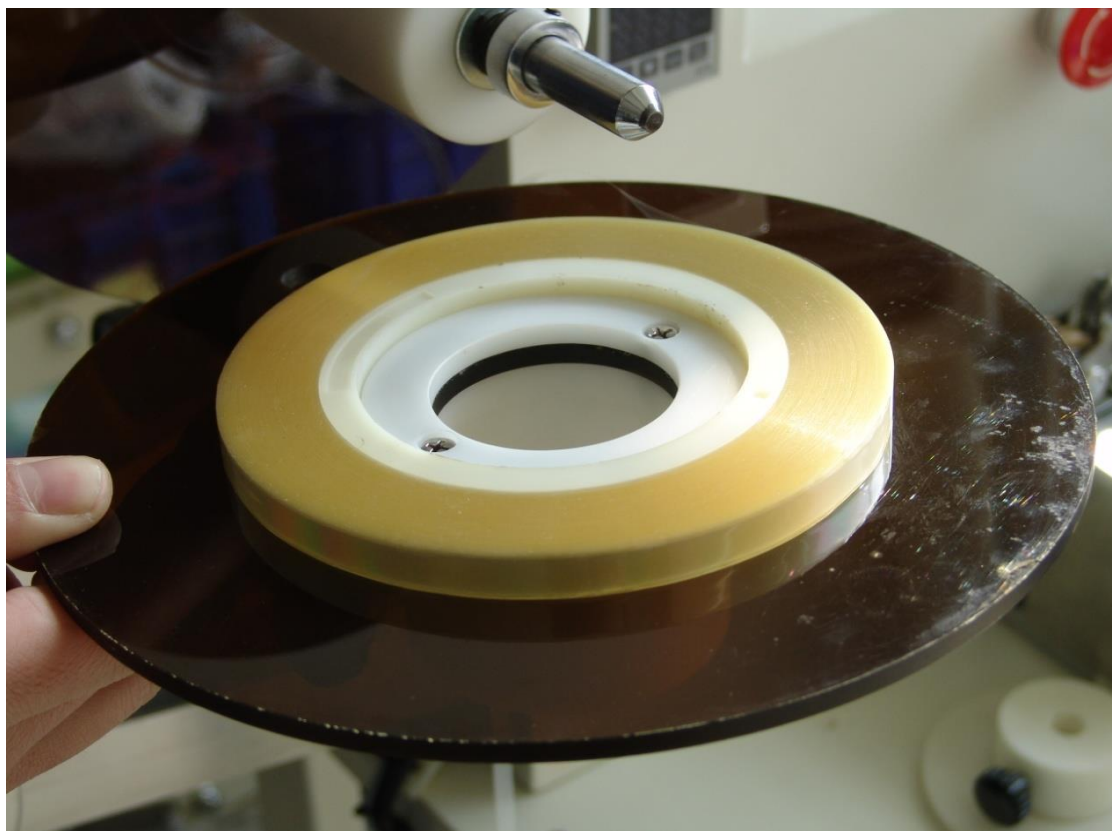
(10) Lead the tape from the front side of the machine into the guide rail.



(11) Press to open the tape pressing wheel and lead the tape to the ratchet.



(12) Connect the tape with the ratchet and release the fixation pressing wheel.



(13) Mount the fixing board onto the upper tape.

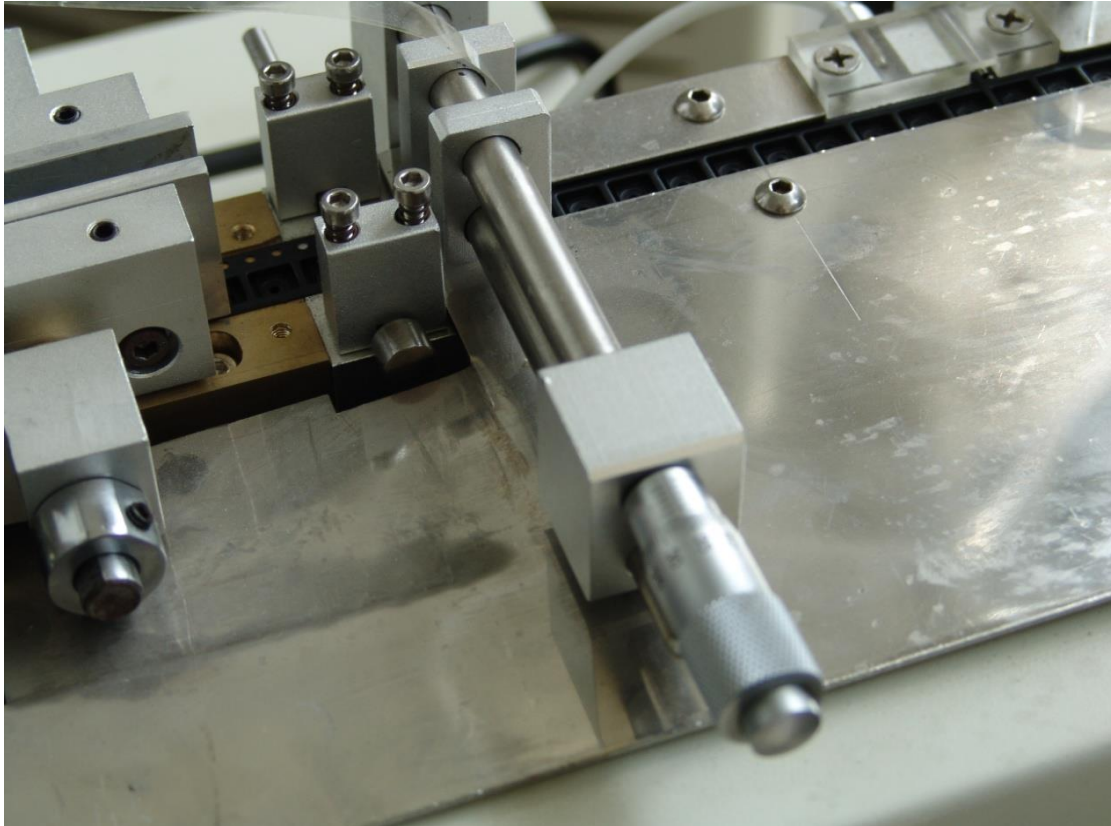




(14) Install the wheel onto the fixing board, move it to proper position and fasten the set screws.



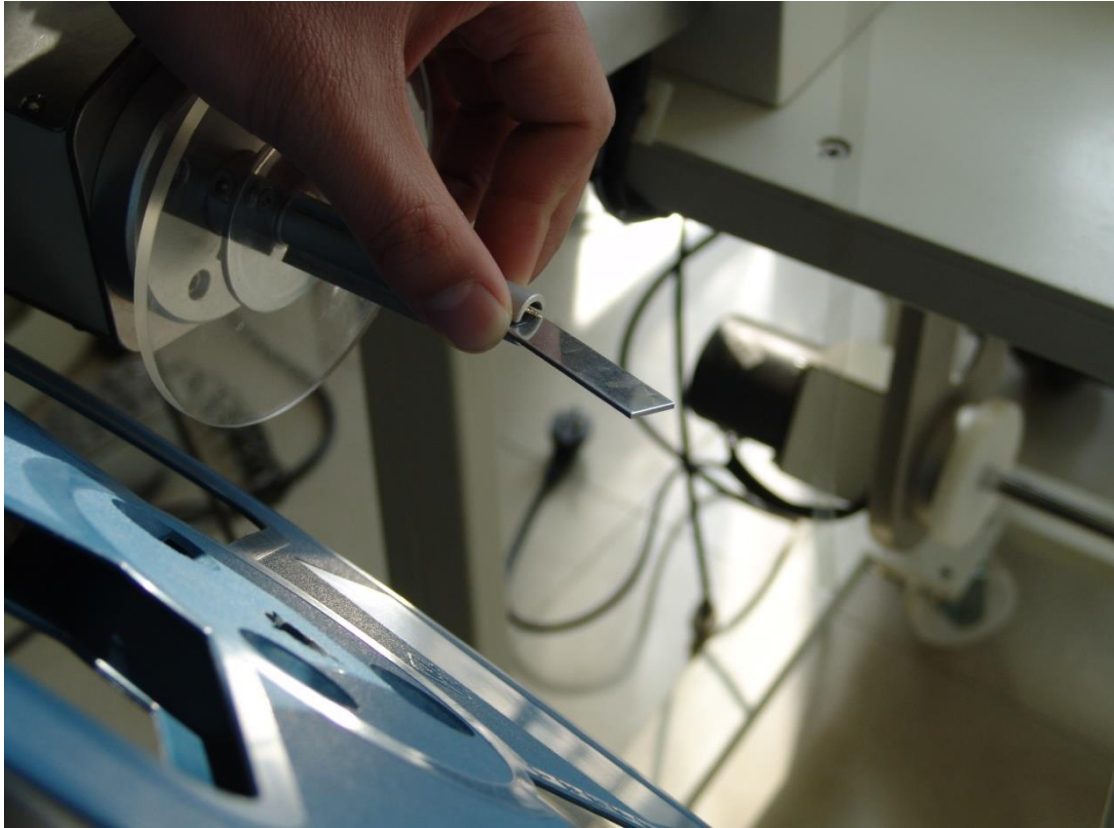
(15) Pull the upper tape out, wind it through the trolley and pull it to the connection position with the lower tape.



(16) Fit the upper tape with the lower tape and adjust the fixing seat according to width of the upper tape.



(17) Extend the affixed tape about 30cm outward.

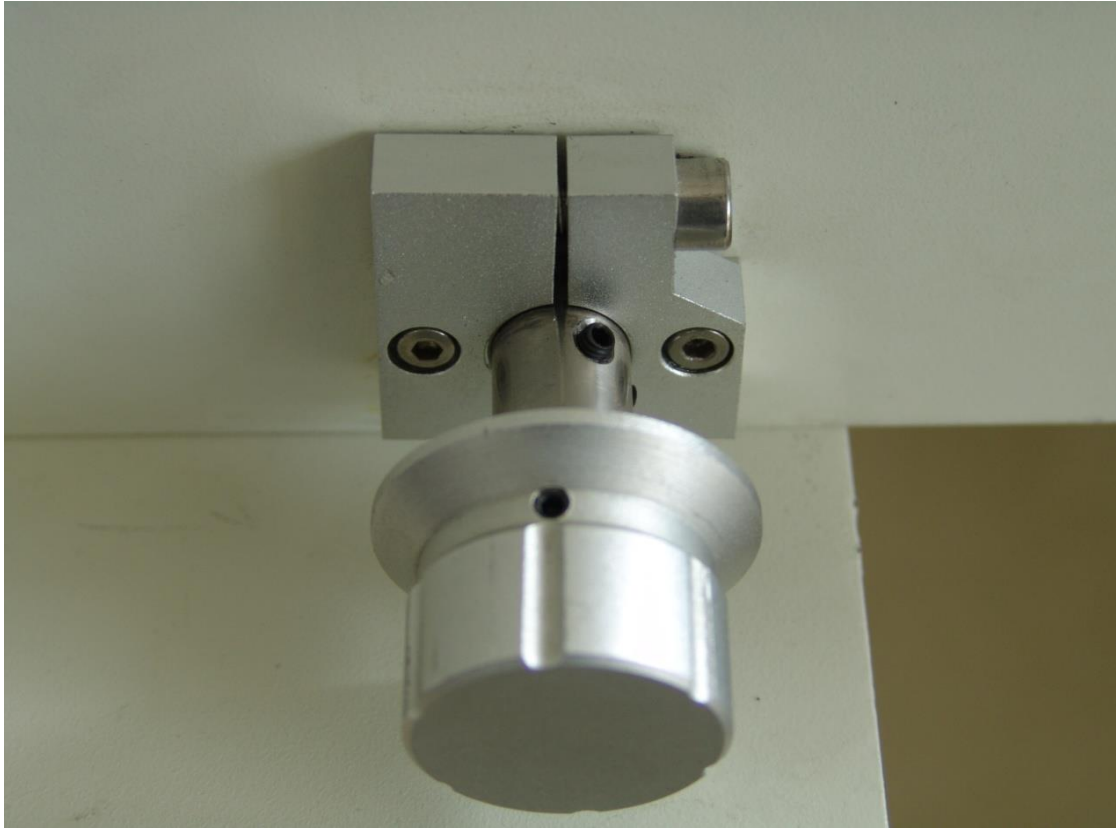


(18) Open the spring clamping piece.



(19) Install an empty tray and release the clamping piece.





(20) Adjust width of guide rail of the lower tape and fasten the sets screw.



Click Above for demo video of Tape out machine installation and usage.

For more information, please contact [techsupport@xeltek.com](mailto:techsupport@xeltek.com) or 408-5308080 x 604.