

Quick PC mode and Stand-Alone Programming Guide SuperPro®IS01 Programmer

Part A: PC Mode Programming

1. Connect programmer to PC via the provided USB cable.
2. Power on the programmer, and wait for a few seconds.
3. Double click on **SuperPro® IS01** icon from the desktop to open software.
4. Click **“Device Select”** to select preferred chip manufacturer and device name. (In this example, **Atmel** chip was selected) Click **“OK”**.

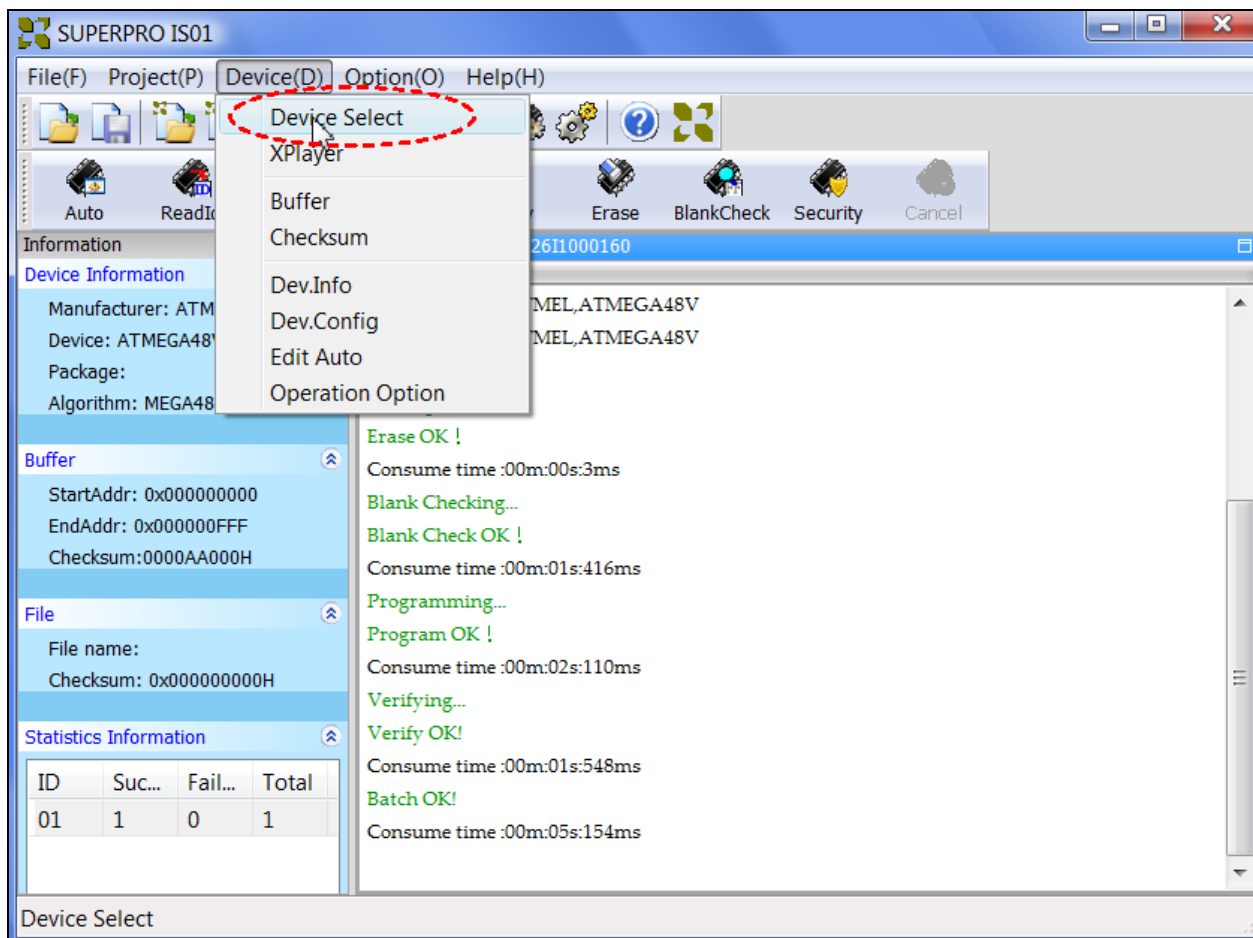


Figure 1: SuperPro IS01 Home Window

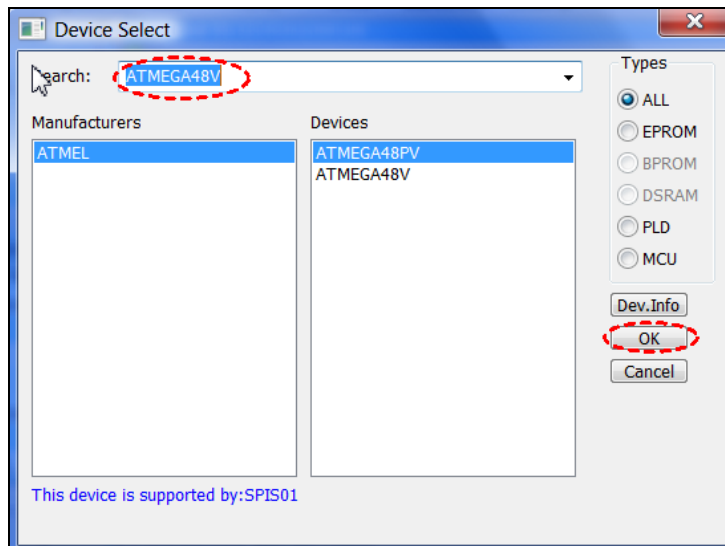


Figure 2: SuperPro IS01 Device Select Window

5. Click **Device** -->**Dev. Info** to open the ISP cable connection diagram similar to Figure 2.

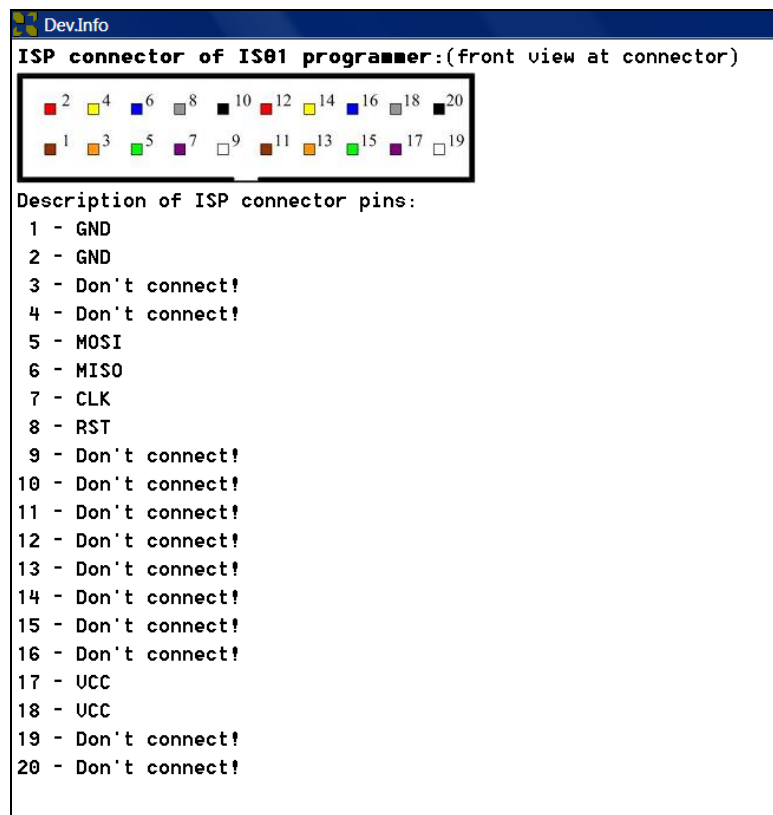


Figure 3: SuperPro IS01 Device Info Window

6. Connect the SuperPro IS01 ISP cable to a target board according to pin descriptions from Figure 3.

7. Load data file to be programmed by selecting "File"--> "Load File"

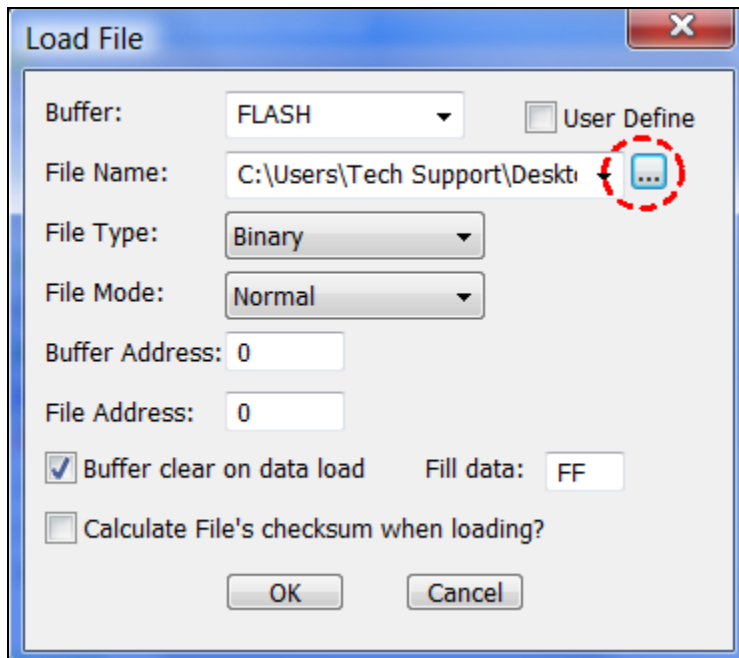


Figure 4: Load File Window

8. "Edit Auto" is like a batch command. Select device functions sequence and operations are carried out according to functions selected in the right column (Auto:).

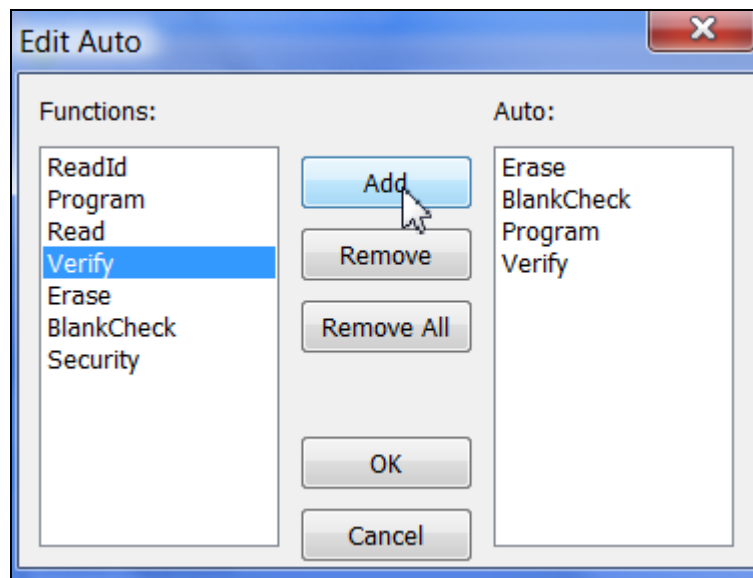


Figure 5: Edit Auto Window

- Set operation options by clicking "Device"-->"Operation Option":

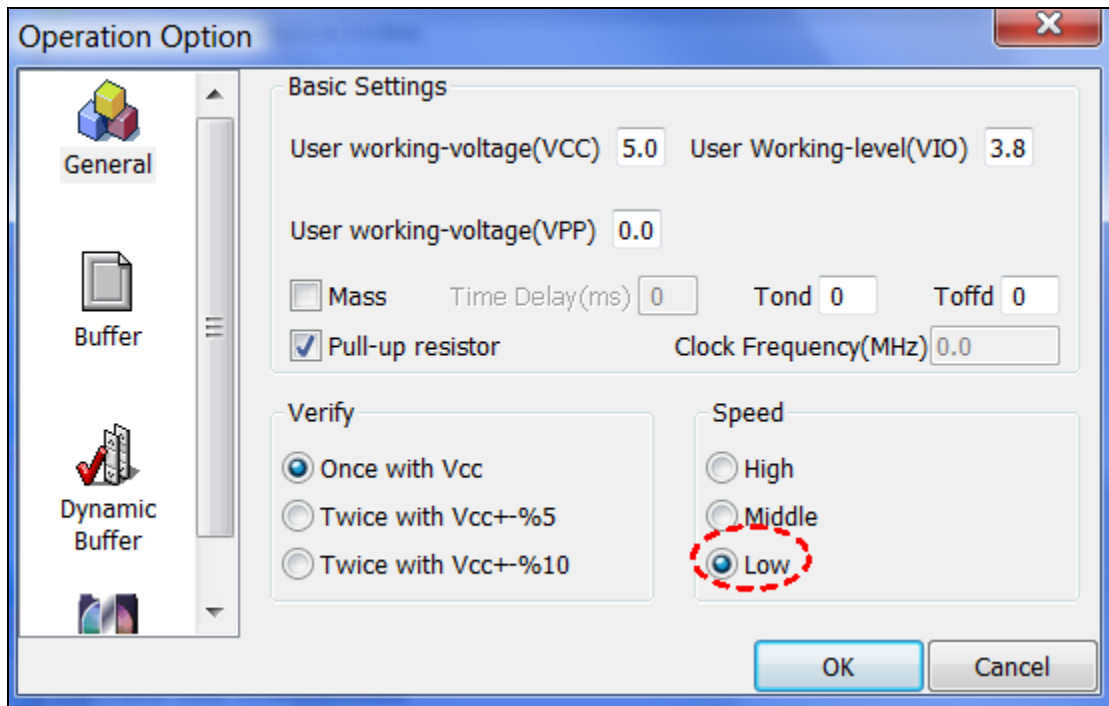


Figure 6: Basic Operation Settings

Usually the default settings are okay.

Note: The default speed setting is set to "High". If ISP01 does not function properly, select lower speed.

- Save Project File by clicking "Project"-->"Save Project"

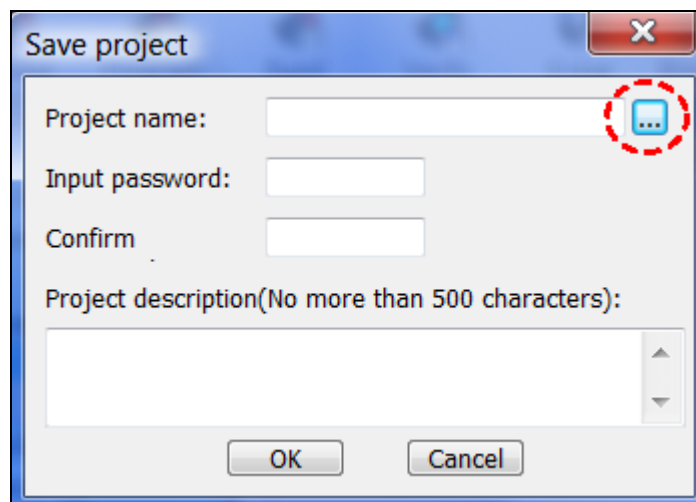


Figure 7: Save Project Window

11. Enter project file name and click **Save**.

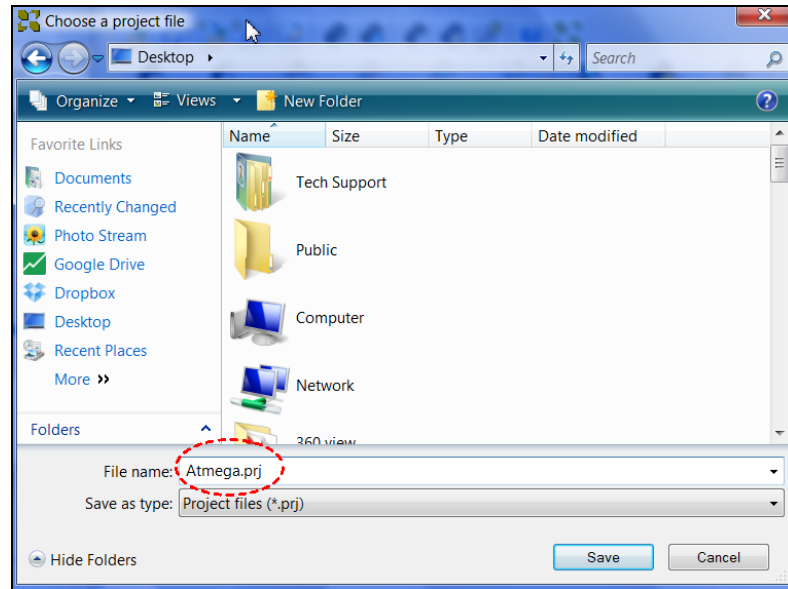


Figure 8: Save Project Window

12. To executing Batch Command (Erase, Blank Check, Program, Verify), select **“Auto”** as shown below:

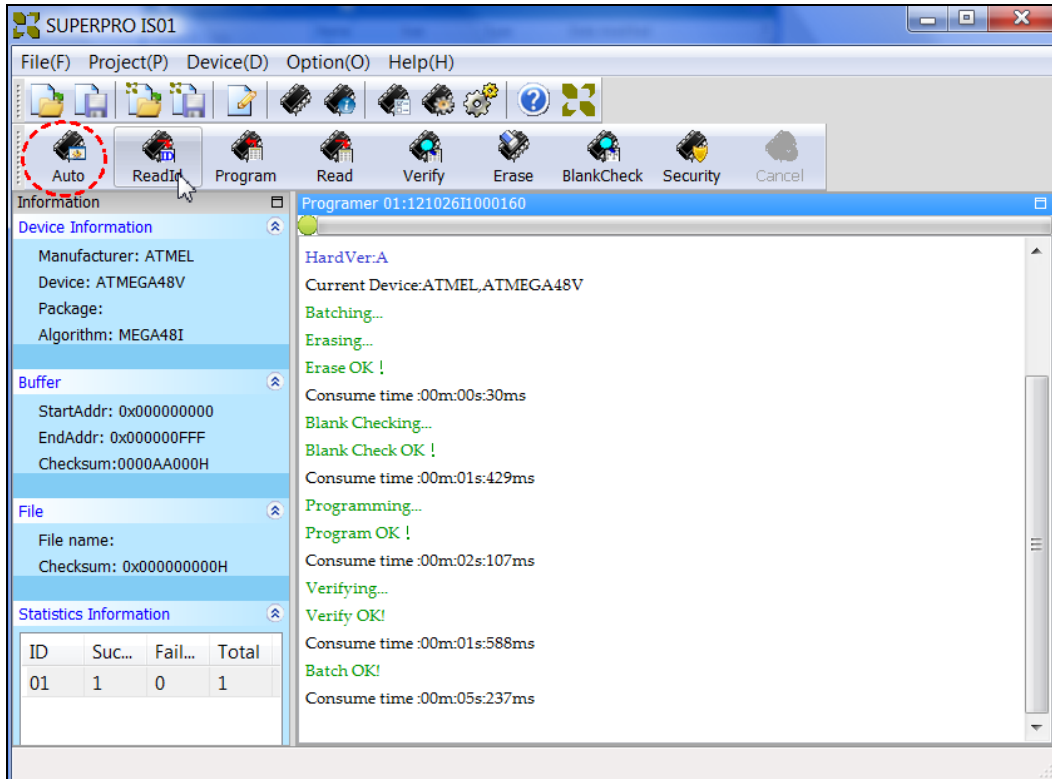


Figure 9: Batch Command Option

Part B: Standalone Programming

13. Select “Project” --> “Manage Project” to load project file(s) into SD Card (SDHC may not work).

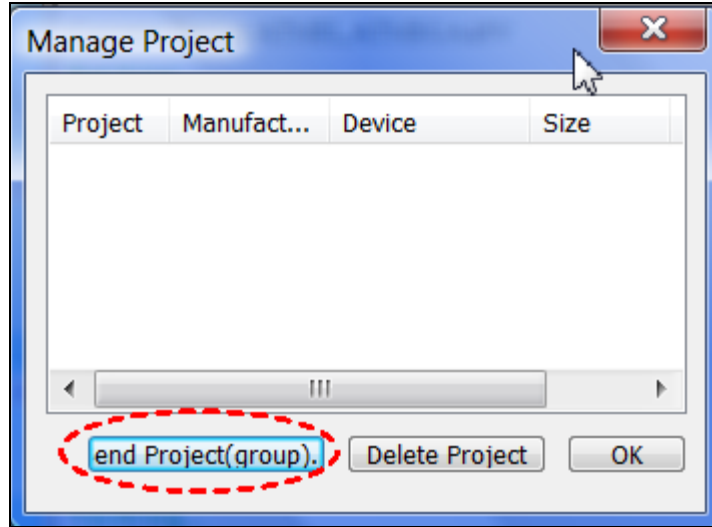


Figure 10: Manage Project Window

14. Click “Send Project,” select desired project file and click “Open.”

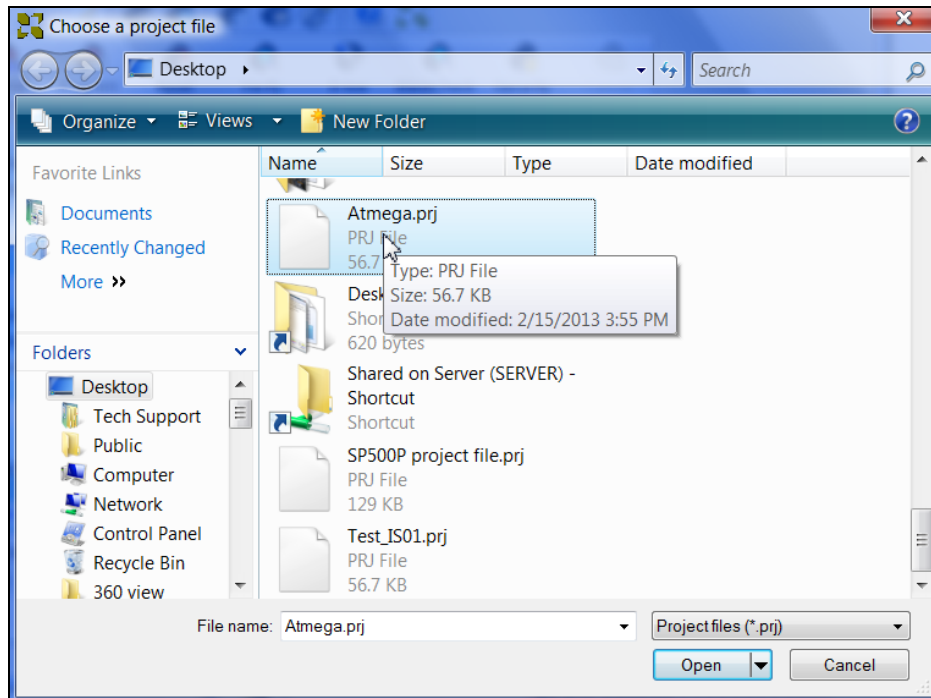


Figure 11: Project Selection Window

15. Click “OK” and turn the programmer off before disconnecting from PC.

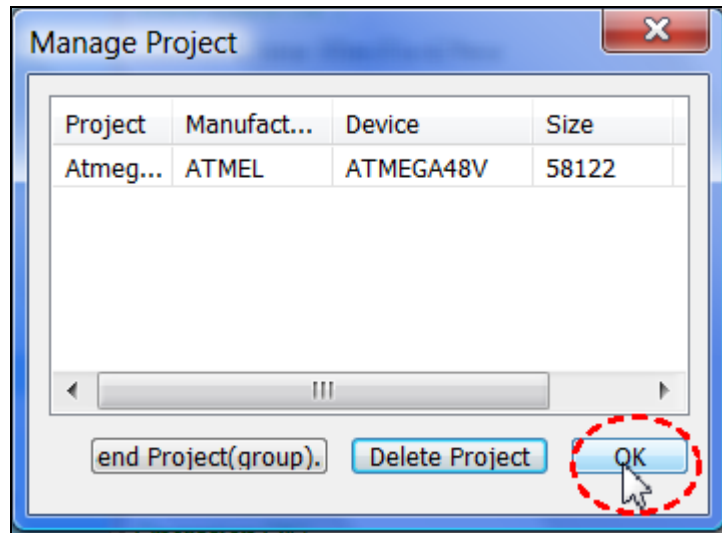


Figure 12: Manage Project Window

16. After disconnecting the USB cable, turn the programmer back on and wait for few seconds.
17. Under stand-alone mode, select projects from the SD card and press “Enter” from the built-in keypad. Press "Exit" to go back to the menu.
18. Press “Run” to execute the sequence of programming operations. Refer to “[Standalone Mode Instructions](#)” for detailed instructions under stand-alone mode.

For any questions, please contact techsupport@xeltek.com